



Vernon Road, London, E3

BUTLER  STAG



Short Let 3 Months
Superb two bedroom
Seventh floor apartment
set within a popular
development in an ultra-
convenient location just
off the historic and vibrant
Roman Road.



- Short Term Let of 3 Months
- Two Bedroom Seventh Floor Apartment
- Kitchen/Living Area with Private Balcony
- Convenient for Local Amenities and Transport Links
- Walking Distance To Victoria Park
- Available 2nd of February 2026
- Secure Modern Development
- Secure Bike Storage

Available from the 2nd of February, this modern apartment is surrounded by a plethora of local amenities, is only a short walk from the wonderful Victoria Park and is within easy reach of both Mile End and Bow Road underground stations.

The property features a bright open-plan kitchen / living room which leads out to a private balcony, two double bedrooms and a smart bathroom.

William Beveridge House is a secure, modern and well-maintained block located adjacent to the beating heart of Bow, the renowned Roman Road.

Short Let of 3 Months
Council Tax Band D

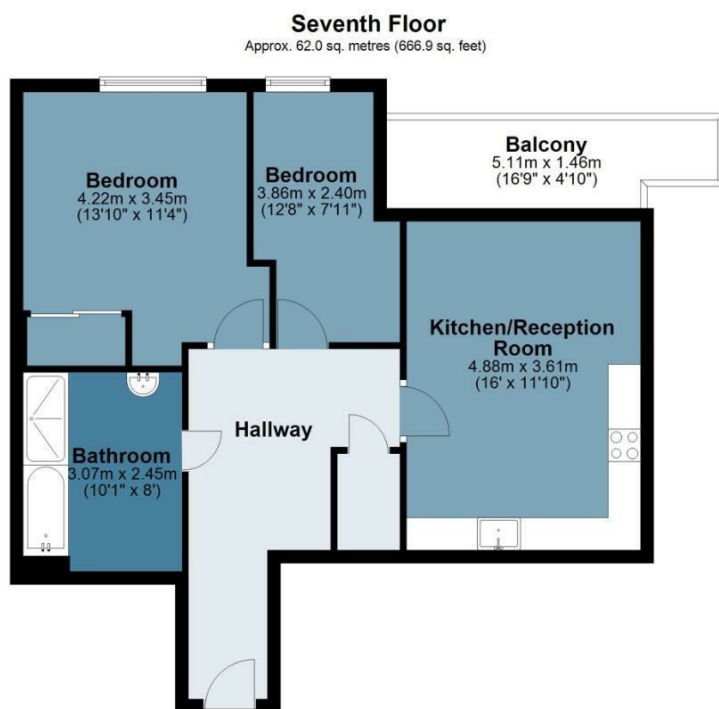




William Beveridge House

Approx. Gross Internal Area 62 Sq M (666.9 Sq Ft)

BUTLER & STAG



Measurements are approximate and for illustration purposes only. While we do not doubt the accuracy and completeness, we advise you conduct a careful independent assessment of the property to determine monetary value.
© @modephoto.uk www.modephoto.co.uk

IMPORTANT NOTICE - These particulars have been prepared in good faith and they are not intended to constitute part of an offer or contract. We have not performed a structural survey on this property and the services, appliances and specific fittings have not been tested. All photographs, measurements, floor plans and distances referred to are given as a guide and should not be relied upon.

BUTLER & STAG

☎ 020 8102 1236

🏠 508 Roman Road, Bow, London, E3 5LU

✉ bow@butlerandstag.com

www.butlerandstag.uk